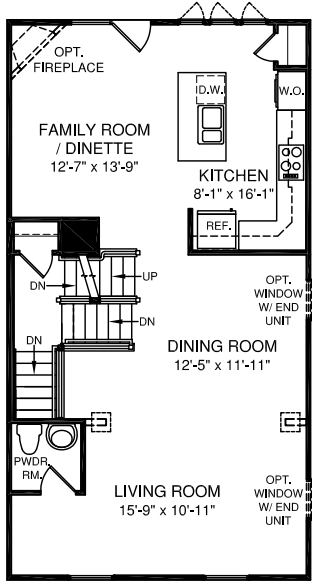
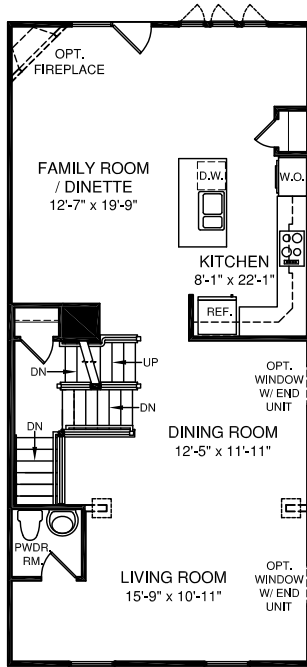


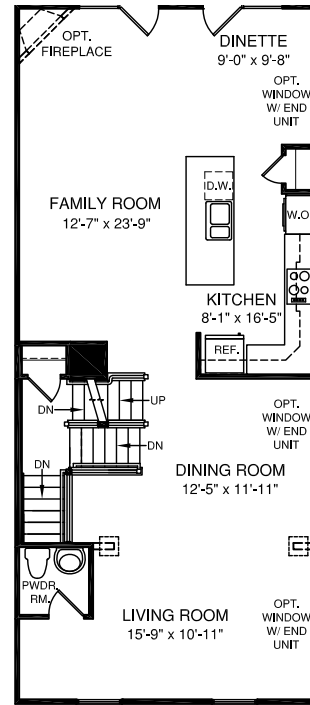
MAIN LEVEL FLOORPLAN



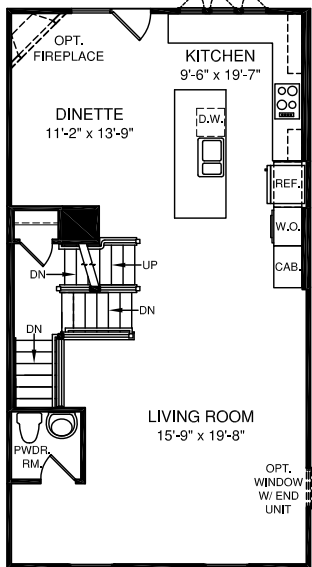
OPT. TRADITIONAL KITCHEN



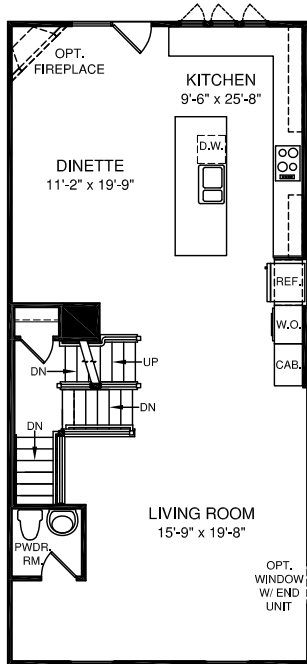
OPT. 6' EXT. W/ OPT. TRADITIONAL KITCHEN



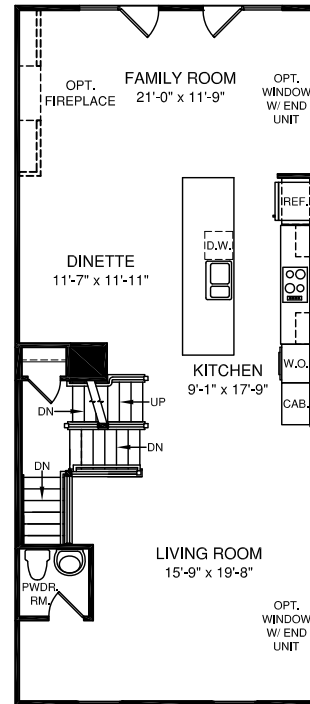
OPT. 10' EXT. W/ OPT. TRADITIONAL KITCHEN



OPEN KITCHEN

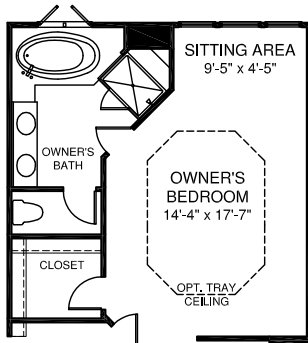


OPT. 6' EXT. W/ OPEN KITCHEN

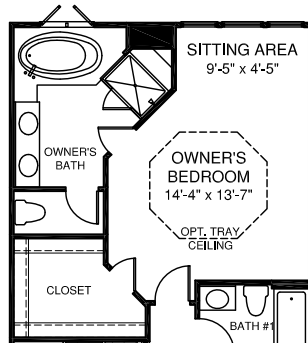


OPT. 10' EXT. W/ OPEN KITCHEN

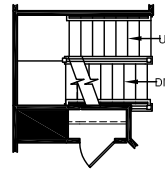
UPPER LEVEL FLOORPLAN



OPT. OWNER'S BATH W/ 10' EXT.



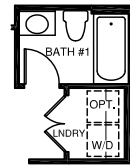
OPT. OWNER'S BATH W/ 6' EXT.



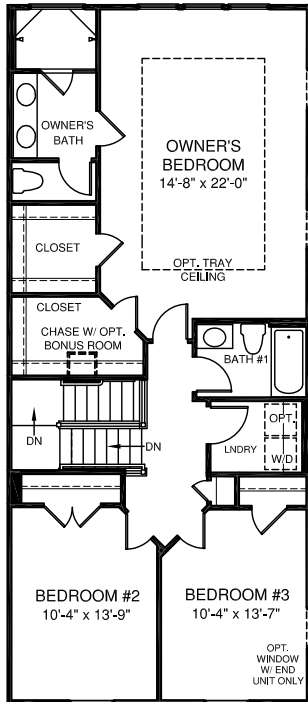
STAIRS W/ OPT. BONUS BEDROOM



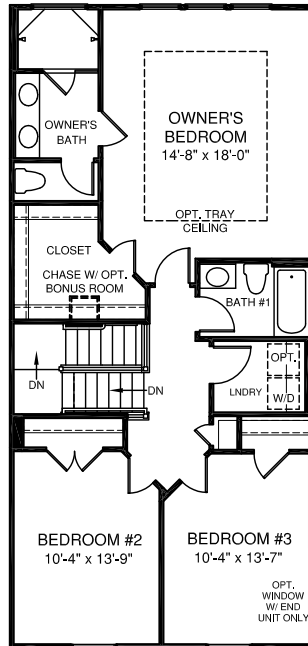
OPT. OWNER'S BATH



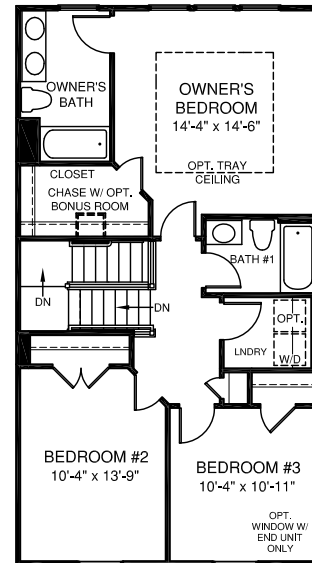
OPT. LAUNDRY CLOSET



OPT. 10' EXTENSION



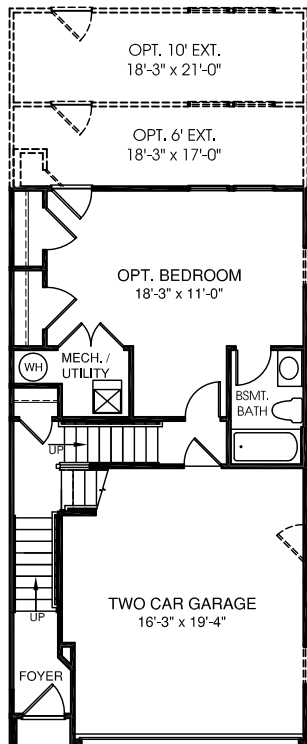
OPT. 6' EXTENSION



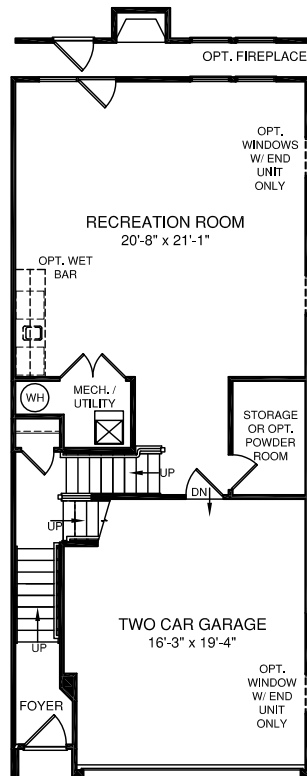
OPT. WINDOW W/ END UNIT ONLY

OPT. WINDOW W/ END UNIT ONLY

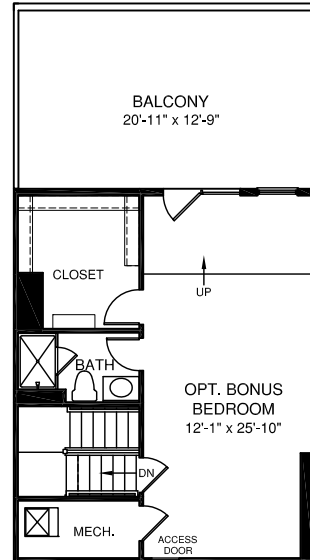
LOWER & OPT. BONUS LEVEL FLOORPLAN



OPT. BASEMENT BEDROOM



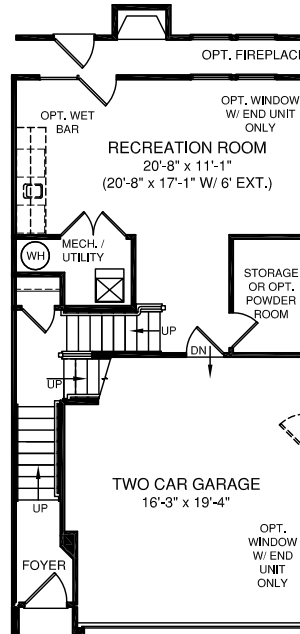
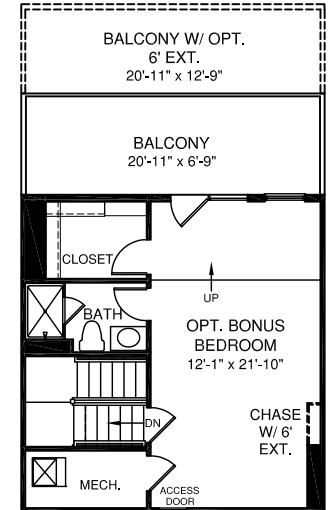
OPT. 10' EXTENSION



OPT. 10' EXTENSION



OPT. WET BAR
(ONLY AVAILABLE W/ 10' EXT.)



NVHomes.com

NV0516JJAS18BLF

Although all illustrations and specifications are believed correct at the time of publication, accuracy cannot be guaranteed. The right is reserved to make changes, without notice or obligation. Windows, doors, ceilings and room sizes may vary depending on the options and elevations selected. Optional items are available at additional cost. This brochure is for illustrative purposes only and not part of a legal contract.

