

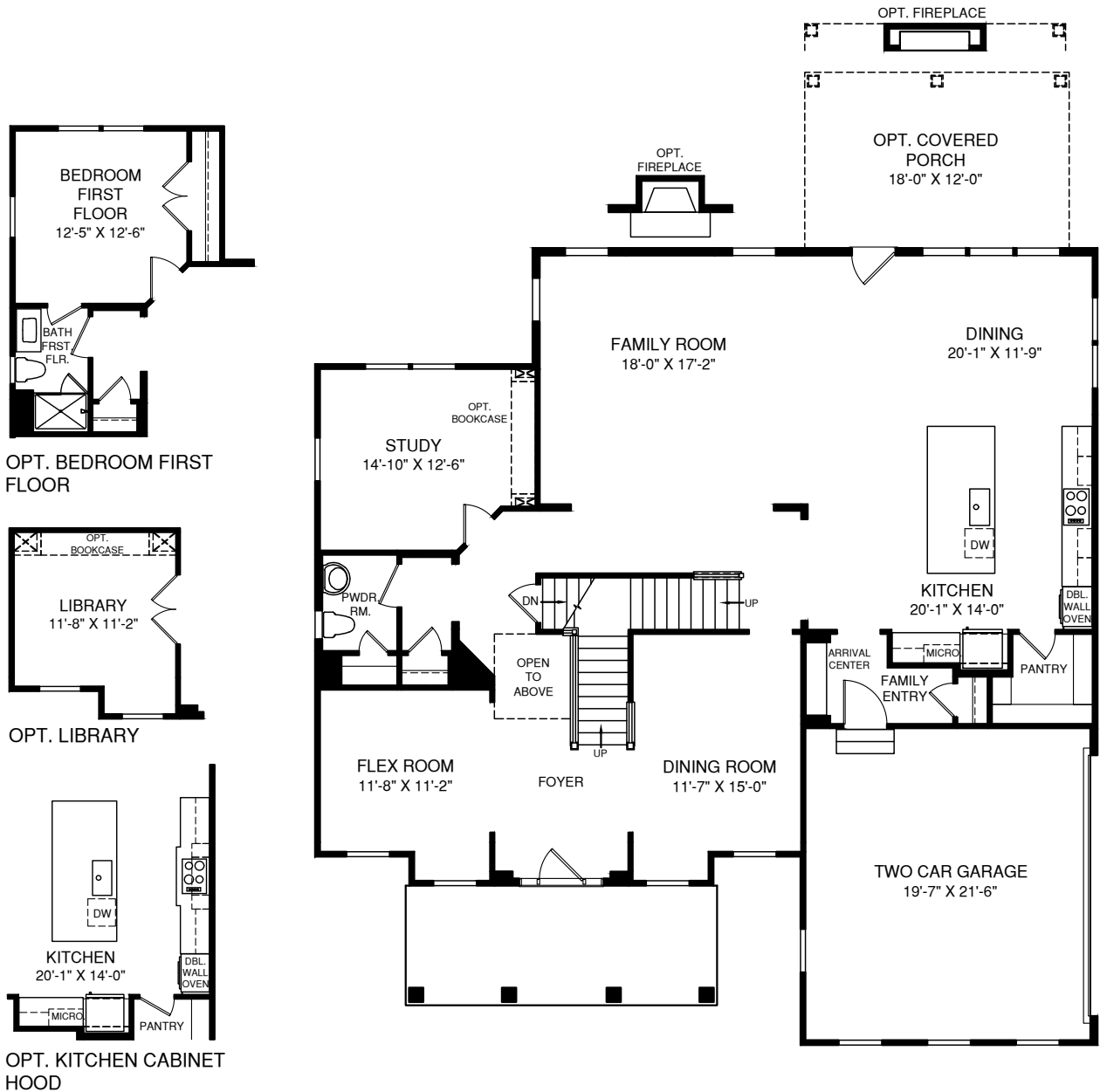
## *The Radford*



Meet the Radford, a stately home with plenty of luxury and grandeur throughout. Greet guests in a foyer worthy of holiday photos. Just beyond, our signature two-story family room opens up to an Island kitchen with breakfast room for casual family dining. This plan offers uncompromised flexibility with options for formal dining, study, library, and even a first-floor guest suite with full bath! Upstairs, all bedrooms have access to en suite baths. And the owner's retreat offers two spacious walk-in closets.

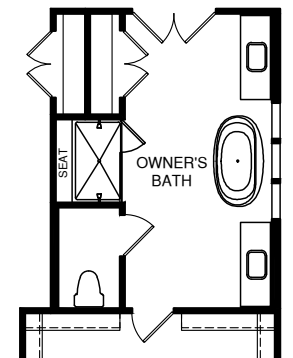
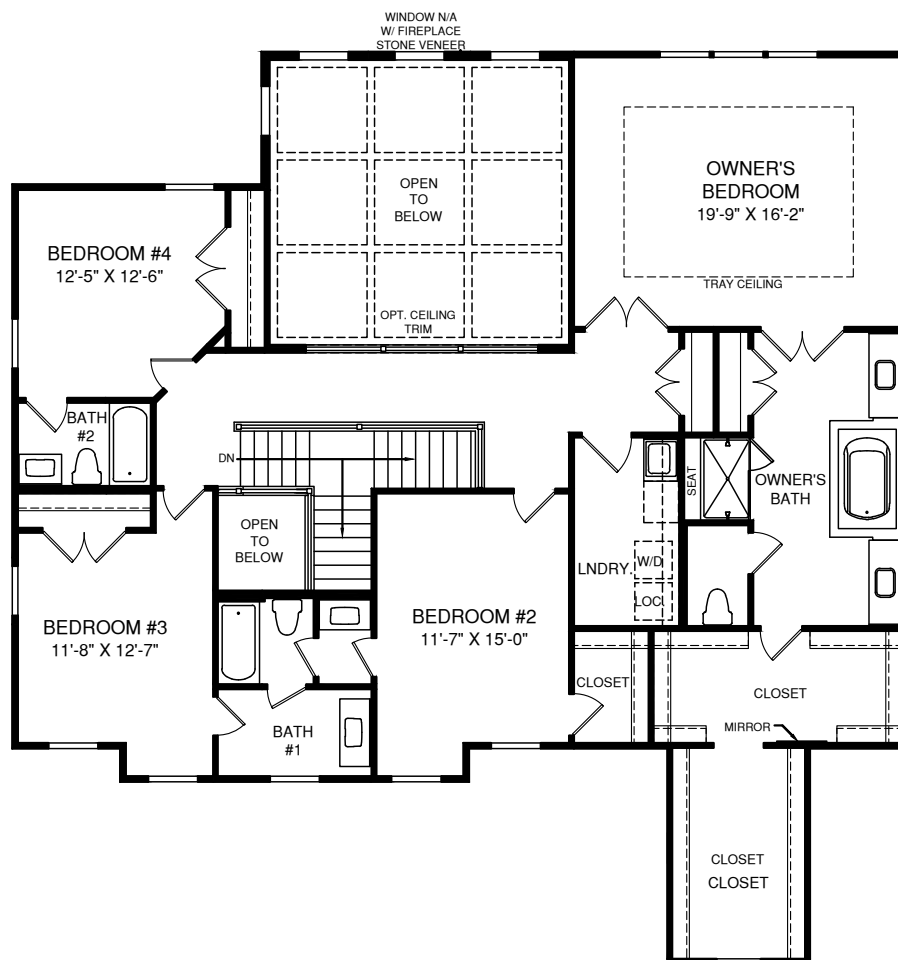
# The Radford

## Main Level



# The Radford

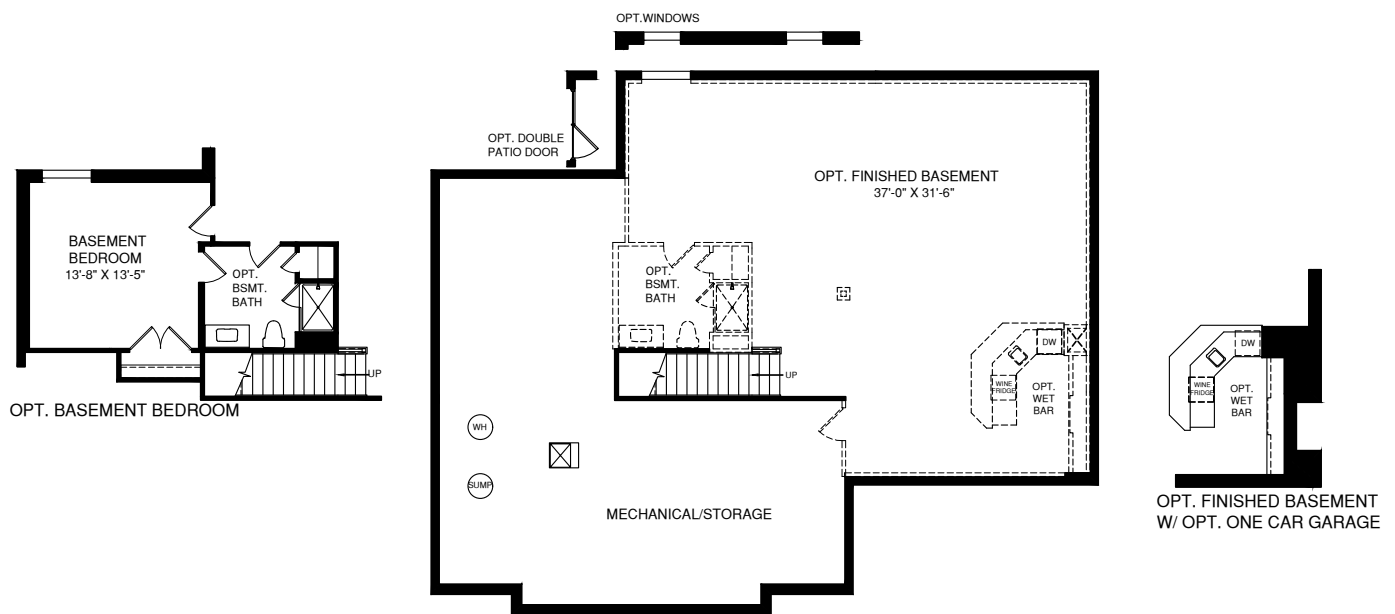
## Upper Level



OPT. OWNER'S BATH  
W/ FREESTANDING  
TUB & ROMAN SHOWER

# The Radford

## Lower Level



Although all illustrations and specifications are believed correct at the time of publication, the right is reserved to make changes, without notice or obligation. Windows, doors, ceilings, and room sizes may vary depending on the options and elevations selected. Optional items indicated are available at additional cost. This brochure is for illustrative purposes only and not part of a legal contract. It is recommended that the architectural blueprints be reserved for further clarification of features. Not all features are shown. Please ask our Sales and Marketing Representative for complete information. Elevations shown are artist's concepts. Floorplans may vary per elevation. NVHomes reserves the right to make changes without notice or prior obligation.

