



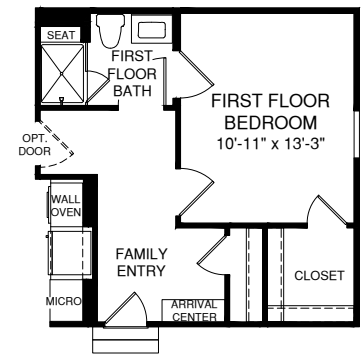
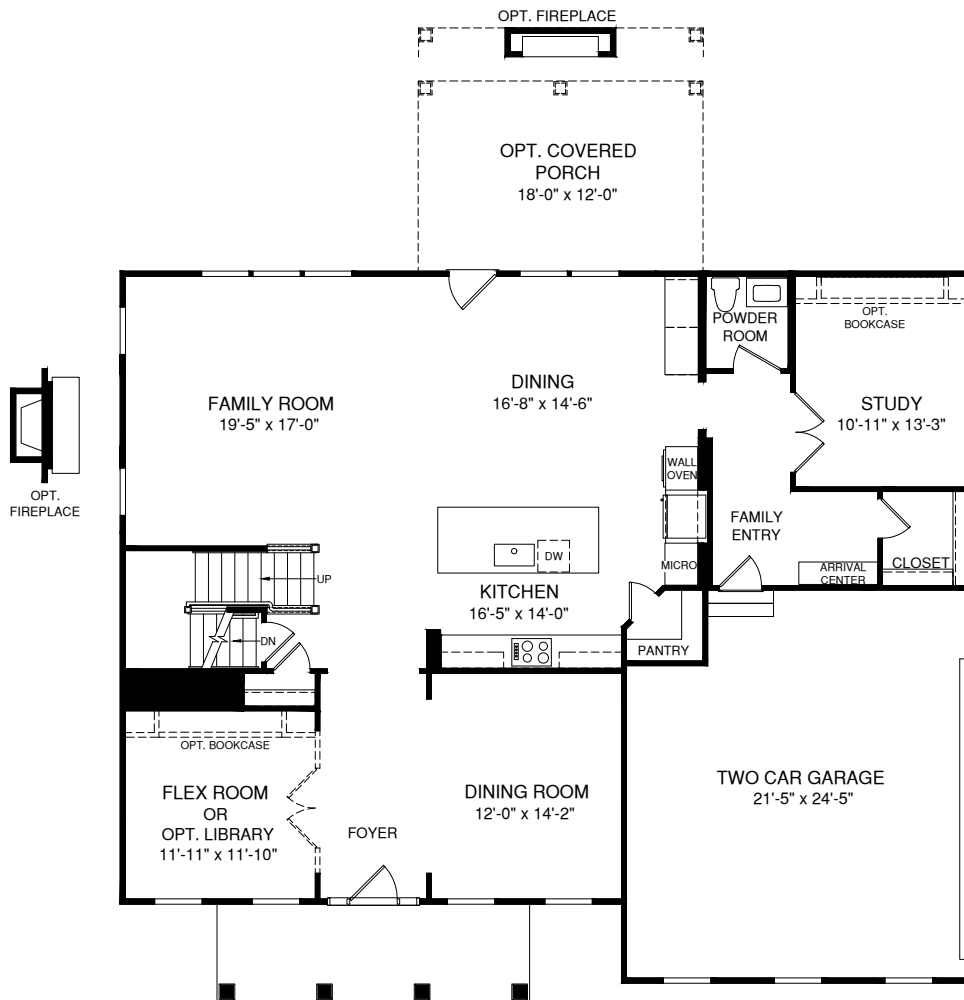
## *The Marymount*



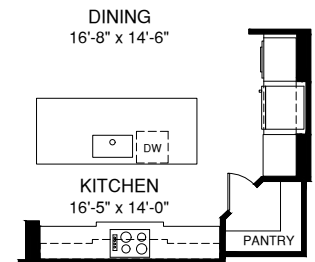
Elegant sophistication describes the Marymount, with an entry fit for royalty. Greet guests in style with a beautiful front porch and host gourmet dinners in the Marymount's spacious dining room. Overnight guests? Welcome them in the available first-floor guest suite. Upstairs, the owner's suite offers an impressive spa bath, sitting area, and two generous walk-in closets. Enjoy sizable secondary bedrooms, all with access to baths and walk-in closets.

# The Marymount

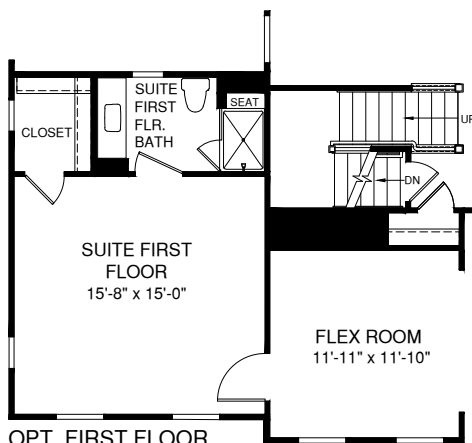
## Main Level



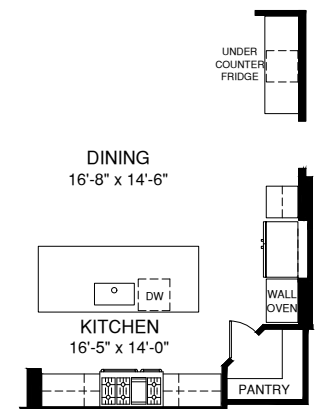
OPT. FIRST FLOOR BEDROOM



OPT. KITCHEN CABINET HOOD



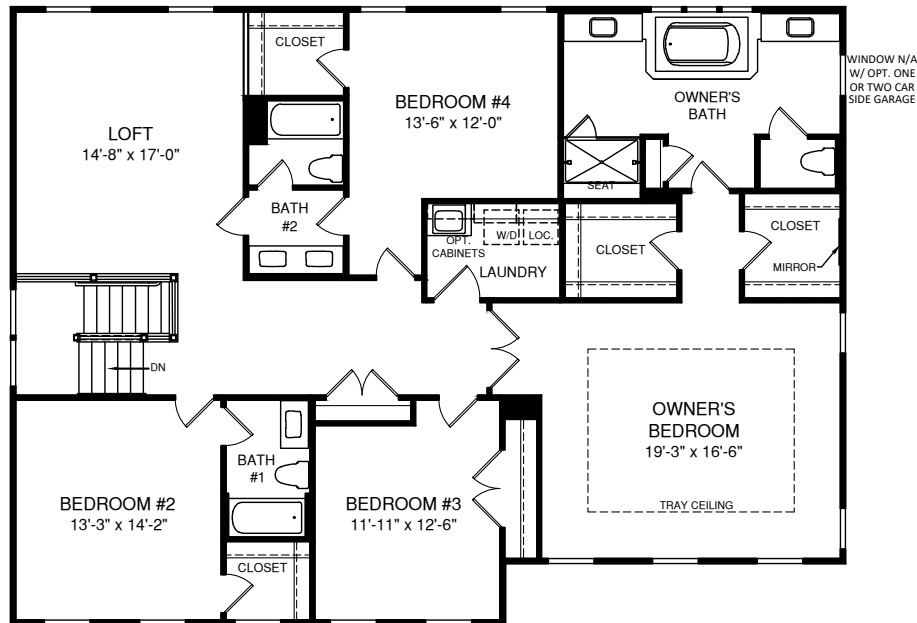
OPT. FIRST FLOOR SUITE



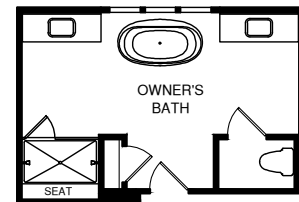
OPT. GOURMET KITCHEN

# The Marymount

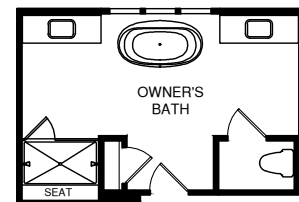
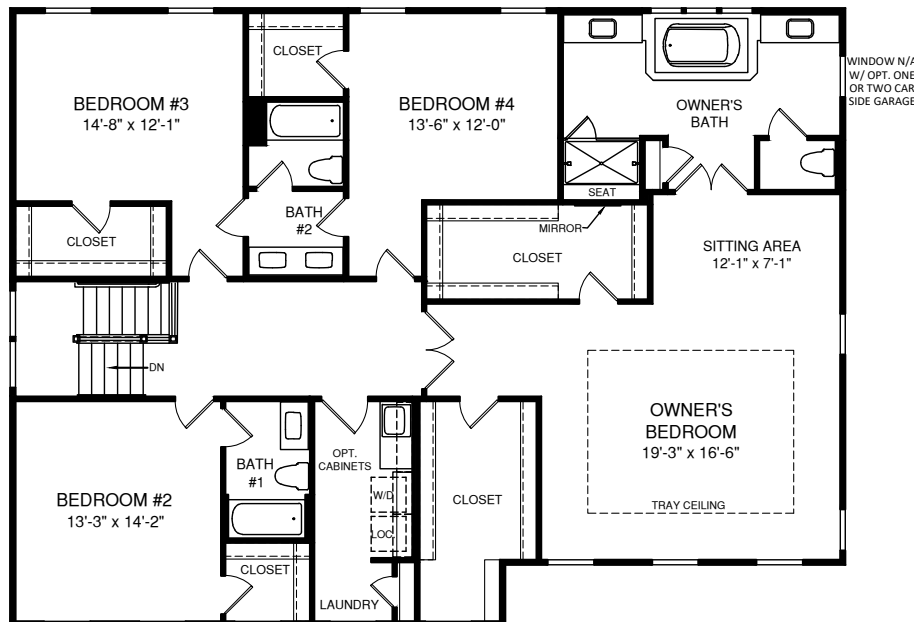
## Upper Level



FOUR BEDROOM W/ OPT. LOFT



OPT. OWNER'S BATH W/  
FREESTANDING TUB & ROMAN  
SHOWER

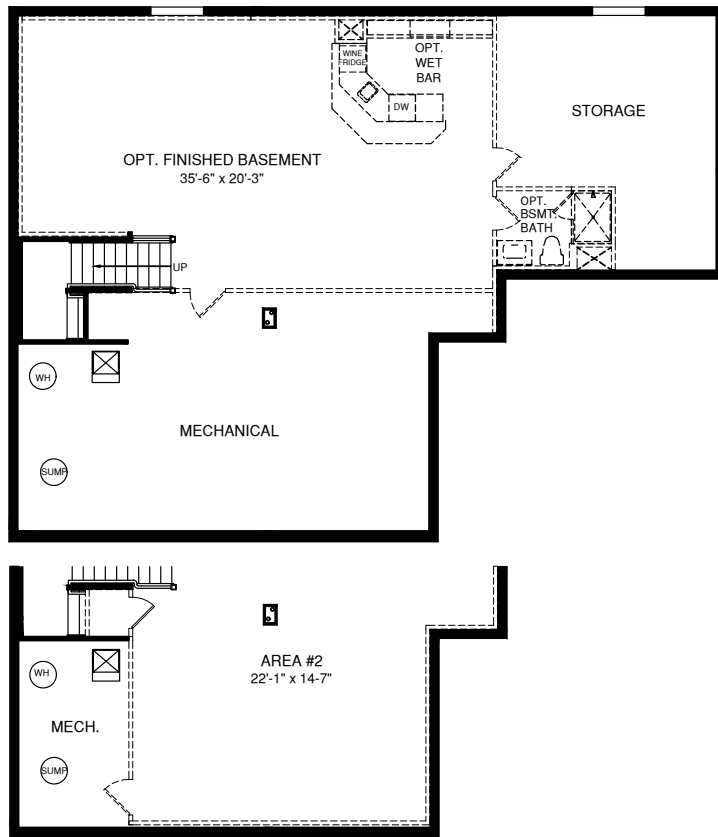


OPT. OWNER'S BATH W/  
FREESTANDING TUB & ROMAN  
SHOWER

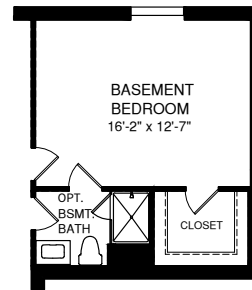
# The Marymount

## Lower Level

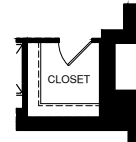
OPT. DOUBLE PATIO DOOR



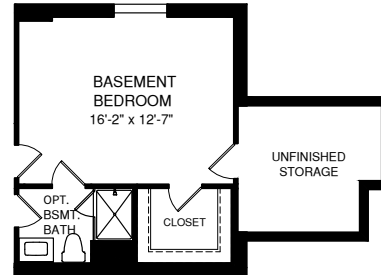
OPT. FINISHED AREA #2



OPT. BASEMENT BEDROOM



OPT. BASEMENT BEDROOM W/  
OPT. ONE CAR SIDE ATTACHED GARAGE



OPT. BASEMENT BEDROOM W/ OPT.  
TWO CAR SIDE ATTACHED GARAGE

Although all illustrations and specifications are believed correct at the time of publication, the right is reserved to make changes, without notice or obligation. Windows, doors, ceilings, and room sizes may vary depending on the options and elevations selected. Optional items indicated are available at additional cost. This brochure is for illustrative purposes only and not part of a legal contract. It is recommended that the architectural blueprints be reserved for further clarification of features. Not all features are shown. Please ask our Sales and Marketing Representative for complete information. Elevations shown are artist's concepts. Floorplans may vary per elevation. NVHomes reserves the right to make changes without notice or prior obligation.

