

STRATFORD
HALL

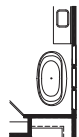
ELEVATION L



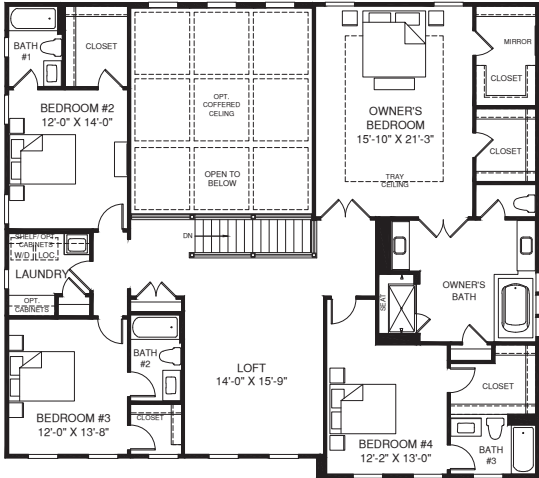
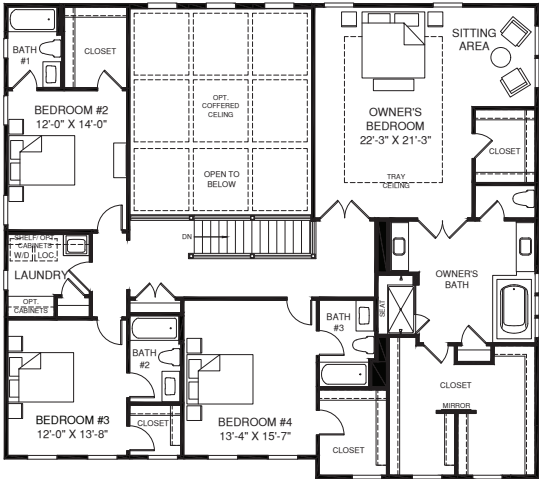
ELEVATION A



ELEVATION B

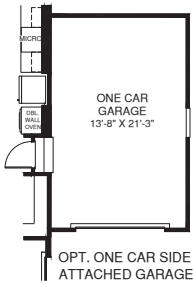
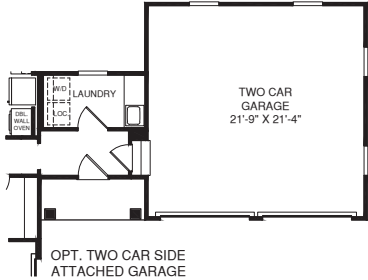
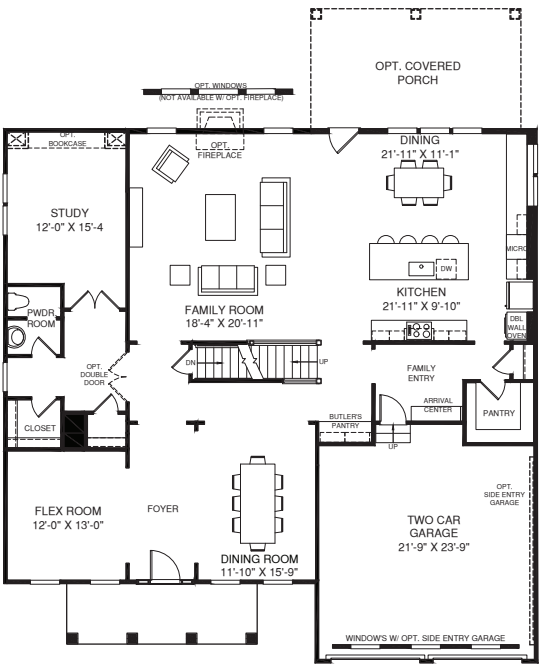
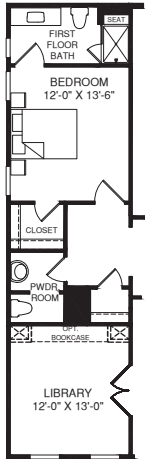
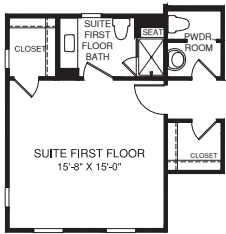


OWNER'S BATH W/ OPT.
FREESTANDING TUB &
ROMAN SHOWER



OPT. FOUR BEDROOM W/ LOFT

UPPER LEVEL



OPT. KITCHEN
CABINET HOOD

An optional finished basement is available. Please see brochure or online marketing material for details.

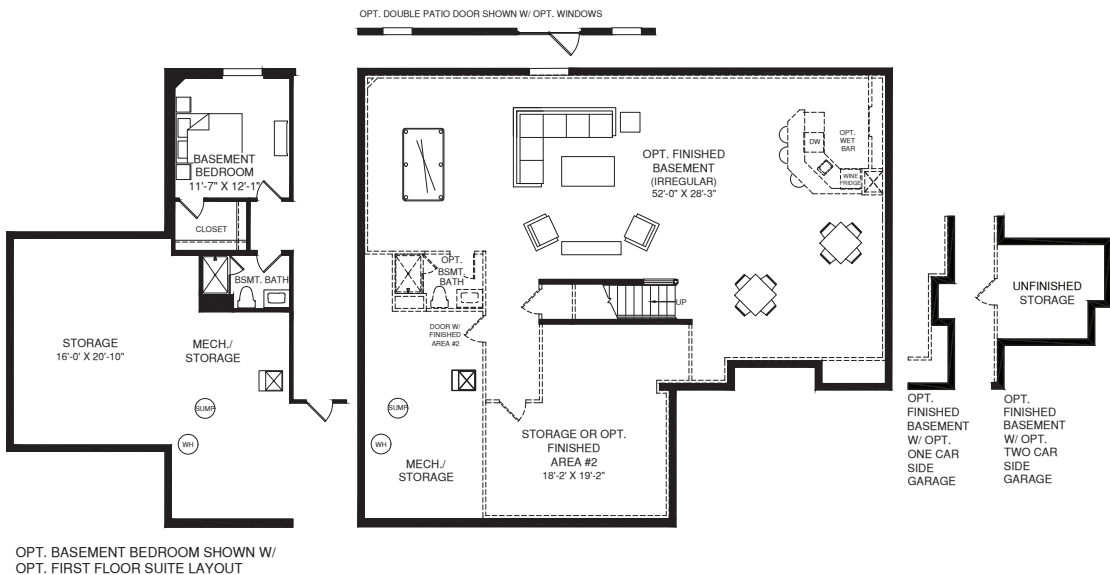
Although all illustrations and specifications are believed correct at the time of publication, the right is reserved to make changes, without notice or obligation. Windows, doors, ceilings, and room sizes may vary depending on the options and elevations selected. Optional items indicated are available at additional cost. This brochure is for illustrative purposes only and not part of a legal contract. It is recommended that the architectural blueprints be reserved for further clarification of features. Not all features are shown. Please ask our Sales and Marketing Representative for complete information.

Elevations shown are artist's concepts. Floorplans may vary per elevation. NVHomes reserves the right to make changes without notice or prior obligation.



NV0221STRAV01BSMT MDWZL





LOWER LEVEL



Although all illustrations and specifications are believed correct at the time of publication, the right is reserved to make changes, without notice or obligation. Windows, doors, ceilings, and room sizes may vary depending on the options and elevations selected. Optional items indicated are available at additional cost. This brochure is for illustrative purposes only and not part of a legal contract. It is recommended that the architectural blueprints be reserved for further clarification of features. Not all features are shown. Please ask our Sales and Marketing Representative for complete information.

Elevations shown are artist's concepts. Floorplans may vary per elevation. NVHomes reserves the right to make changes without notice or prior obligation.

NV0221STRAv0185MT MDWZL

