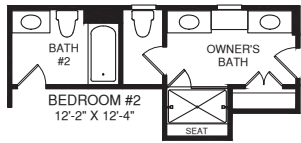


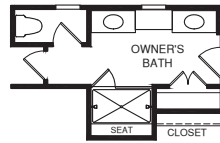
ELEVATION A



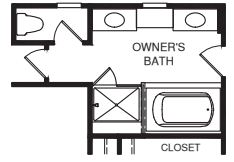
ELEVATION C



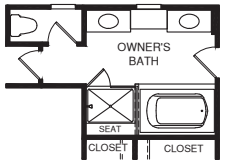
OPT. BATH # 2 SHOWN W/
OPT. OWNER'S BATH W/ ROMAN SHOWER



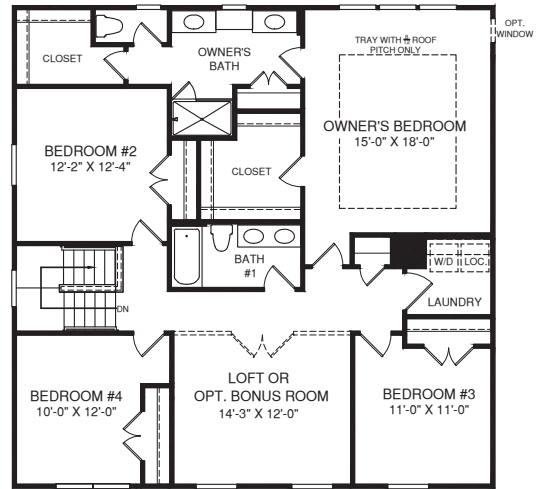
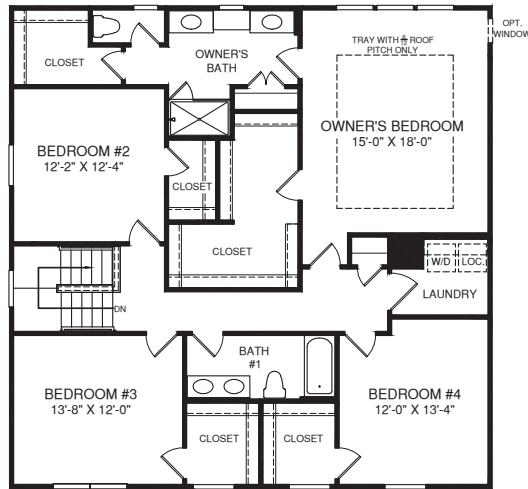
OPT. OWNER'S BATH
W/ ROMAN SHOWER



OPT. OWNER'S BATH W/
SOAKING TUB & SHOWER

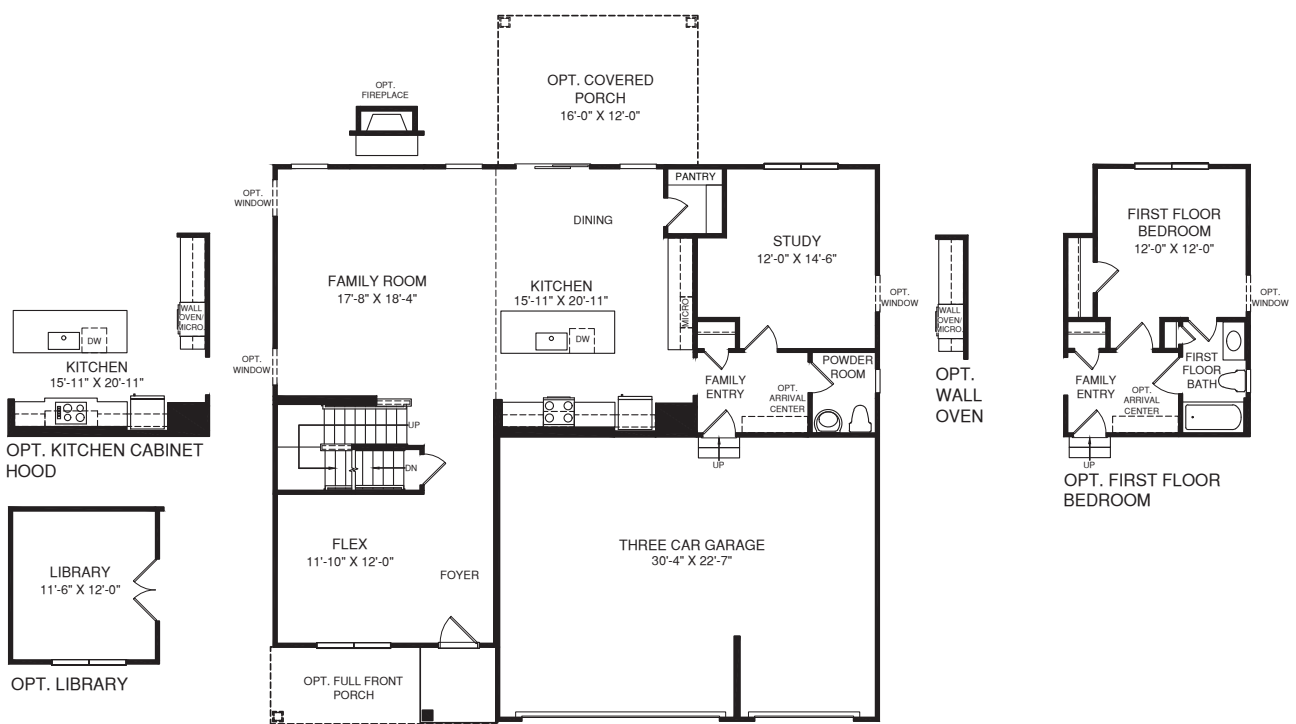


OPT. OWNER'S BATH W/
SOAKING TUB & SHOWER



OPT. FOUR BEDROOMS W/ LOFT LAYOUT

UPPER LEVEL



MAIN LEVEL

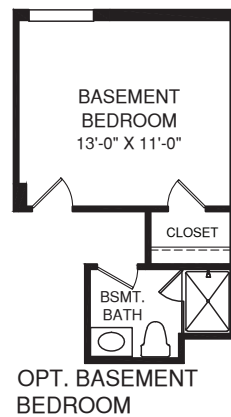
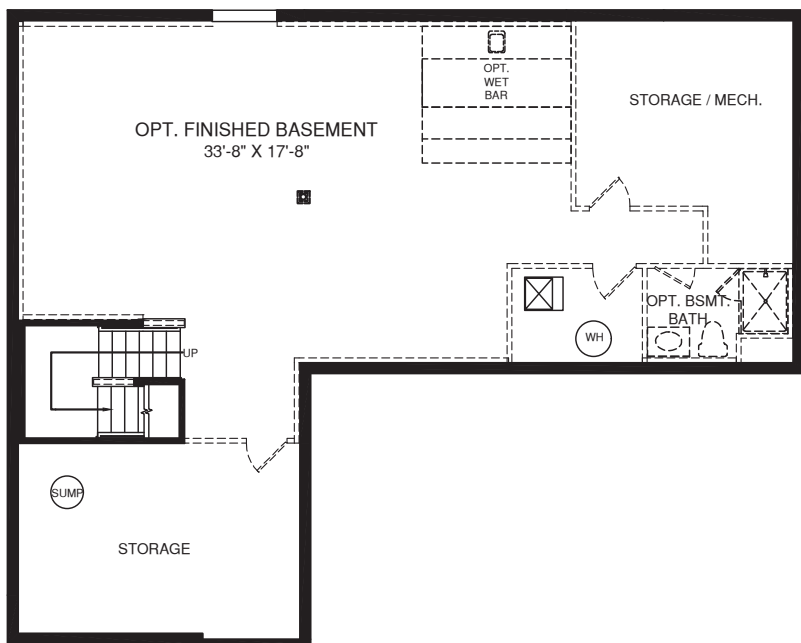
An optional finished basement is available. Please see brochure or online marketing material for details.

Although all illustrations and specifications are believed correct at the time of publication, the right is reserved to make changes, without notice or obligation. Windows, doors, ceilings, and room sizes may vary depending on the options and elevations selected. Optional items indicated are available at additional cost. This brochure is for illustrative purposes only and not part of a legal contract. It is recommended that the architectural blueprints be reserved for further clarification of features. Not all features are shown. Please ask our Sales and Marketing Representative for complete information.

Elevations shown are artist's concepts. Floorplans may vary per elevation. Heartland Homes reserves the right to make changes without notice or prior obligation.

HH0122LK000v01BSMT HH5gc

OPT. SLIDING GLASS DOOR SHOWN W/ OPT. BASEMENT WINDOW



LOWER LEVEL



Although all illustrations and specifications are believed correct at the time of publication, the right is reserved to make changes, without notice or obligation. Windows, doors, ceilings, and room sizes may vary depending on the options and elevations selected. Optional items indicated are available at additional cost. This brochure is for illustrative purposes only and not part of a legal contract. It is recommended that the architectural blueprints be reserved for further clarification of features. Not all features are shown. Please ask our Sales and Marketing Representative for complete information.

HH0122LK000v01BSMT HH5